

For Users of Machine Tools made in Japan



CAUTION

**Manage machine
tools made in
Japan
with precaution
(2024.6.28)**



©2024 Japan Machine Tool Builders' Association

About this material

The Japan Machine Tool Builders' Association, or JMTBA prepared this material to precaution users of machine tools made in Japan on managing your machine tools from the perspective of security and export control.

In Japan, the management of machine tools is subject to regulations based on international regimes for security and export control, and by Japanese laws. Please pay attention in order not to cause any incidents related to security and export control, by understanding the substance of this material.

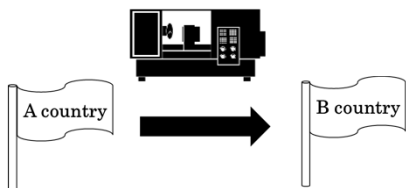




Transfer to
another location



Sell to another
company



Export to another
country

CAUTION

There are cases that require obtaining individual consent from METI Japan prior to transfer, re-sale or export of machine tools regardless of whether they are new or used ones. Please contact your supplier of the machine tools prior to these actions. If you can't contact, please consult the manufacturer of the machine tools .

To:ABC Co.,Ltd.

STATEMENT OF ASSURANCE

We certify that all of the facts contained in this statement are true and correct to the best of our knowledge and we shall promptly send a supplemental statement to you, disclosing any change of facts or intentions set forth in this statement.

We will not dispose any product listed in item 3 below in a manner contrary to the representations made in this statement or the regulations.

1.Importer

Name:

Address:



5.Restriction of use

We will not use the product/re-product and its related technology & software for the purpose to develop and/or manufacture the weapons of mass destruction (i.e., nuclear weapons, biological weapons, chemical weapons and missiles).

6.Restriction of resale

We will not re-export or retransfer the product/re-product and its related technology & software to any foreign country. However, if **we have to re-export or retransfer the product/re-product and its related technology & software to the foreign country unavoidably, we will obtain a prior agreement about the transaction from you.**

Signature of representative:

Name (Type or print) :

Title :

Date :

CAUTION

If you signed Assurance on the left to purchase new or used machine tools in the past, please contact the supplier prior to re-transfer, re-sale, export, etc. of the machine tool. If you can't contact, please consult the manufacturer of the machine tool.



To:ABC Co.,Ltd.

LETTER OF ASSURANCE

1. Importer
Name:
Address:



7. Assurance for the end use
We will use the goods and their replicas for civil use only, we will never use them for the development or the manufacture of weapons for mass destruction such as nuclear, biological or chemical weapons and missiles.
8. Assurance for re-sale, re-transfer , or re-export of the goods.
We will never re-sell, re-transfer , or re-export the goods and their replicas.
However, **in case we re-sell, re-transfer, or re-export the goods and their replicas owing to unavoidable circumstances, we shall obtain a prior written consent from ABC Co.,Ltd.**

Name of end user: _____
Title of Signer: _____
(Signature) : _____
Date: _____

CAUTION

If you signed Assurance on the left to purchase new or used machine tools in the past, please also contact the supplier prior to re-transfer, re-sale, export, etc. of the machine tool. If you can't contact, please consult the manufacturer of the machine tool.



(This Form is designed by METI and shall be completed by the end-user in the country of destination.)

FORM 2

Name of the exporter in Japan

END-USE CERTIFICATE (EUC)

for presentation to the Export Control Authority of Japan (METI)

SECTION1: PARTIES CONCERNED

(a)	Name of Exporter	
(b)	Name of Buyer	
(c)	Buyer's Address	(Country)
(d)	Name of Consignee	
(e)	Consignee's Address	(Country)
(f)	Name of End-User	
(g)	End-User's Address	(Country)
(h)	Specific Location where the Item(s) will be used (if different from (g))	(Country)

(d) We (I) shall not re-export the above-mentioned Item(s). In the event we (I) have to re-export the Item(s), we shall obtain prior consent of (the name of the exporter) who was obliged by METI.

(e) (When the above-mentioned Item(s) include(s) technology -- yes (The Signer shall put a check mark by hand)), it will be treated as strictly confidential.

(f) Additional Commitment(s):

(g) The ownership and/or rights to use of the above-mentioned item(s) will only be transferred to a third person/company on condition that this third person/company accepts the commitments of the above declaration as binding for itself and on condition that this third person /company is known to conduct civil business activities.

(h) (The Signer shall put a check mark by hand) We (I) were (was) explained and surely understand the contents of "Notice relating to EUC" from METI.

Signature by the president / authorized person of the company/organization

<input type="text"/>	
Name of the company/organization	
Name of the signer in block letters	Title of the signer
Date	

CAUTION

If you signed Certificate on the left to purchase new or used machine tools in the past, please also contact the supplier prior to re-transfer, re-sale, export, etc. of the machine tool. If you can't contact, please consult the manufacturer of the machine tool.



NOTICE

In case you re-transfer, re-sale or export this machine, please follow the laws and regulations of the administrative agency of the relevant country and government.

Please inform us of the export and / or resale of this machine as well.

CAUTION

Please contact the supplier in advance if you are to re-transfer, re-sell, export, etc. the machine tools equipped with the caution plaque or seal on the left.

If you can't contact, please consult the manufacturer of the machine tool.

NOTICE

In case you export and /or resell this machine, please follow the laws and regulations of the administrative agency of the relevant country and government.

This machine incorporates a relocation detection system to prohibit machine operation when a vibration beyond regulation is applied or when the machine is relocated.

Please contact our service office prior to relocating this machine after initial installation.

CAUTION

Re-transfer, re-sell, export, etc. of machine tools, equipped with the caution plaque or seal on the left, without consulting the supplier, risk prohibiting the machine's operation. Please contact with your supplier of the machine tool always prior to re-transfer, re-sell, export, etc. If you can't contact, please consult the manufacturer of the machine tool.

**Please consult supplier when the incidents below occur.
If you can't, please consult the manufacturer of the machine tool.**



If you are asked to move the machine tool or to transfer it from the location installed by government of your country or state etc.



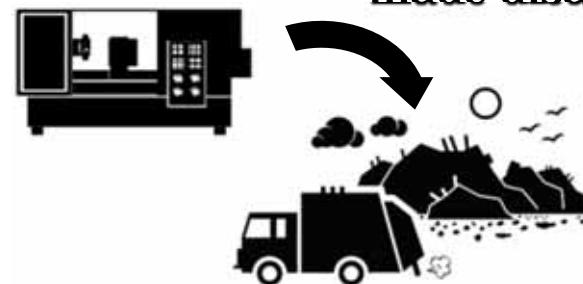
Where you must acquire or relinquish machine tools in a business merger or acquisition etc.



If you must relinquish the machine tool by a business assignment, going out or bankruptcy of business



If you must transfer the machine tool to evacuate from a natural or man-made disaster



If you want to scrap the machine tool